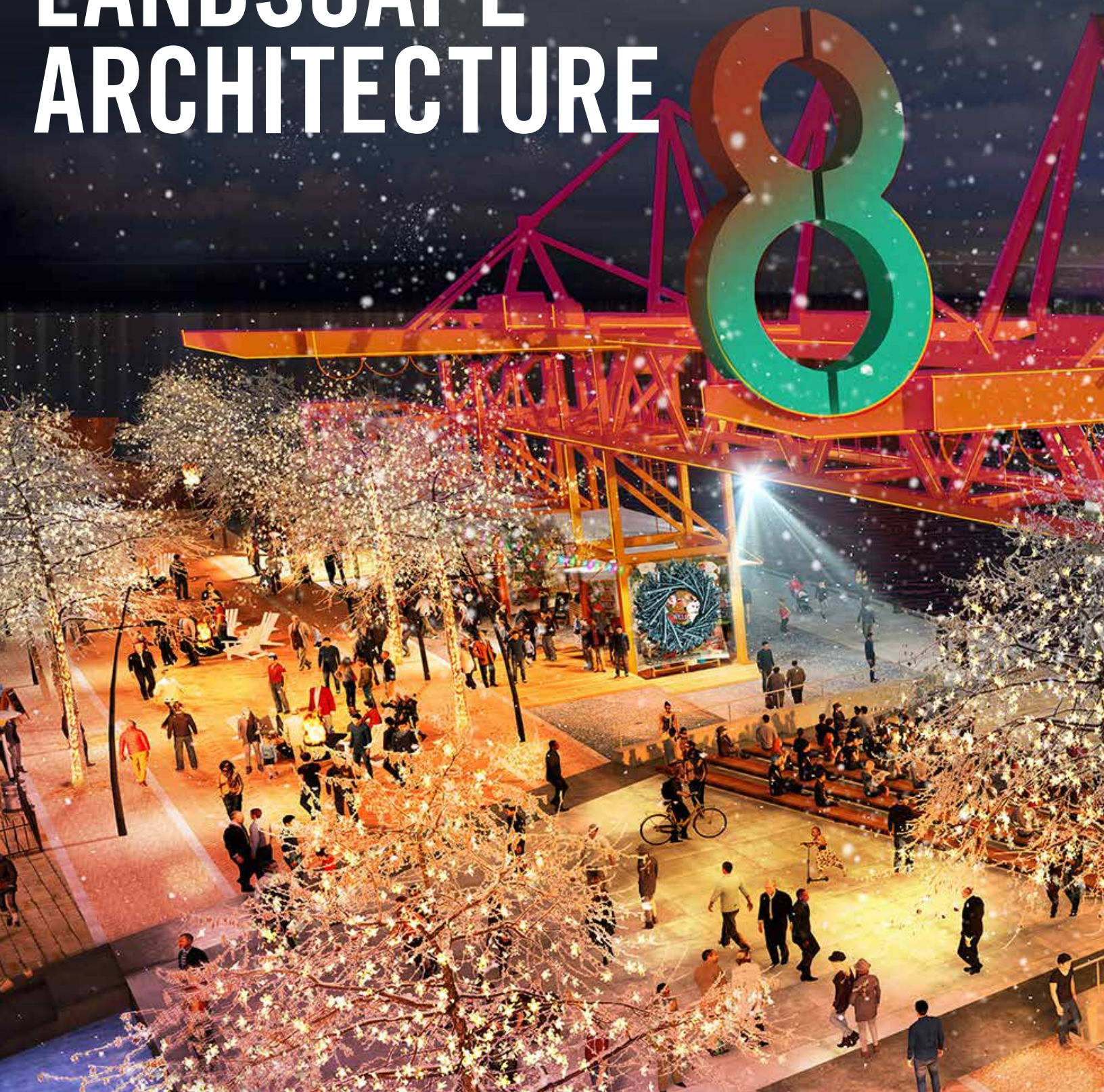


# BREAKING NEW GROUND IN LANDSCAPE ARCHITECTURE



T: +1 416 696 8686  
E: BUSINESS@FORREC.COM

**FORREC**



OUR LANDSCAPE ARCHITECTURE  
STUDIO DOES MORE THAN DESIGN SPACE.  
**WE CREATE EXPERIENCES.**





YOUR PROJECTS BENEFIT FROM OUR GLOBAL ENTERTAINMENT EXPERTISE AND KNOWING HOW PEOPLE AND PLACES CONNECT.





PIER 8 • HAMILTON, ONTARIO

EVERY PLACE HAS A STORY AND WE FIND  
THE MOST MEANINGFUL WAY TO TELL IT.



CLARKSON VILLAGE GATEWAY • MISSISSAUGA, ONTARIO

# PARKS + STREETSAPES



TORONTO BOTANICAL GARDEN AND EDWARDS GARDENS • TORONTO, ONTARIO

**WE MASTER PLAN EXPERIENCES  
FOR URBAN SPACES AND NATURAL ENVIRONMENTS.**



EAST YORK CIVIC COMMONS • TORONTO, ONTARIO

# PUBLIC SPACES



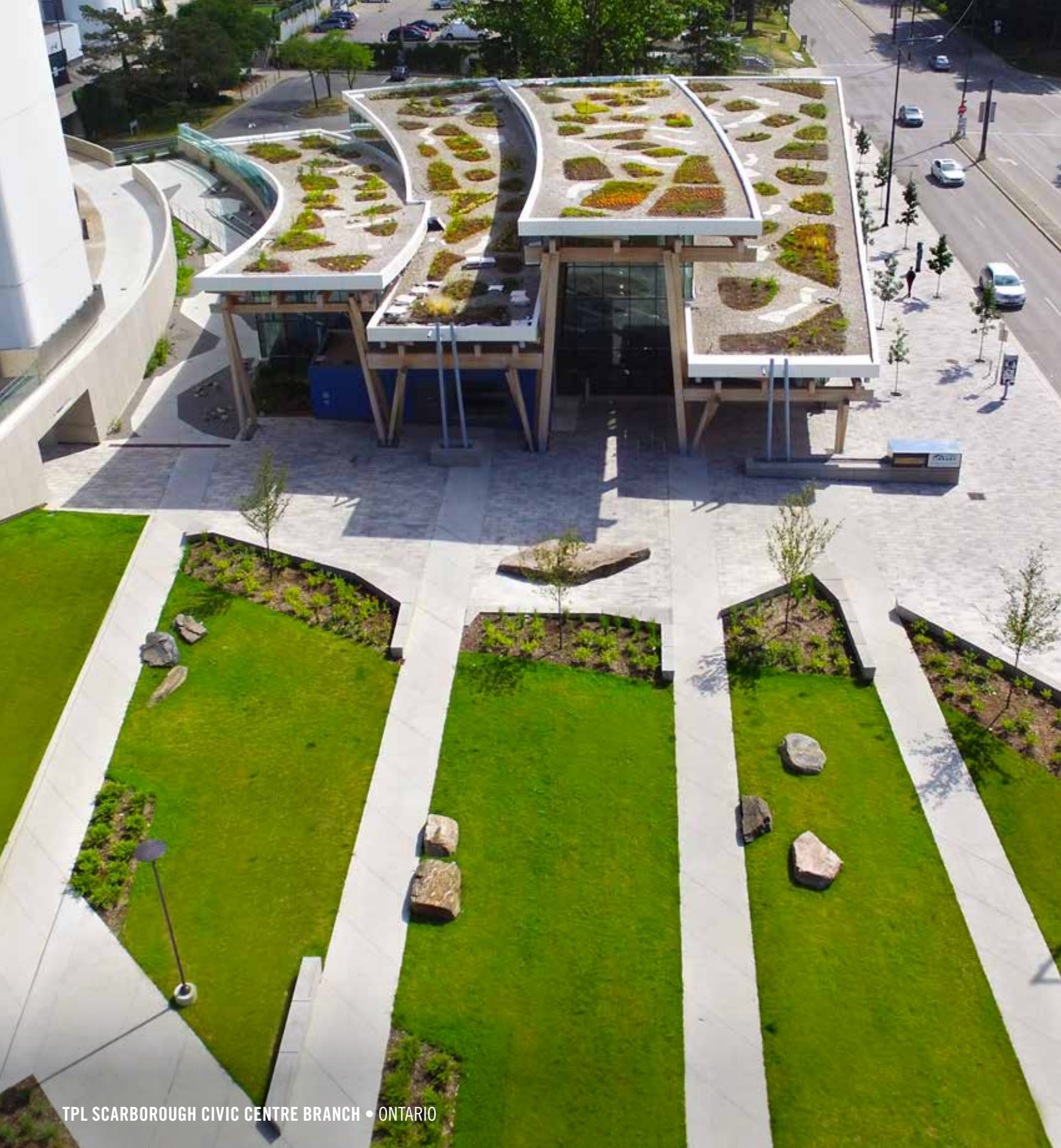
VICTORIA PARK SUBWAY STATION AND BUS TERMINAL REPLACEMENT • TORONTO, ONTARIO

**NATURE IS OUR DESIGN PARTNER.**



MARKET WHARF CONDOMINIUMS • TORONTO, ONTARIO

# COMMUNITIES



TPL SCARBOROUGH CIVIC CENTRE BRANCH • ONTARIO

TOGETHER WE CREATE DISTINCTIVE DESTINATIONS IN  
ONTARIO, CANADA AND AROUND THE WORLD.



BERGERON CENTRE FOR ENGINEERING EXCELLENCE • TORONTO, ONTARIO

# EDUCATIONAL + INSTITUTIONAL

# YOUR PROJECT HAS ACCESS TO ALL OUR IN-HOUSE SPECIALIZED SERVICES



CREATIVE

LANDSCAPE  
ARCHITECTURE

GRAPHICS

INTERIOR  
DESIGN

ARCHITECTURE



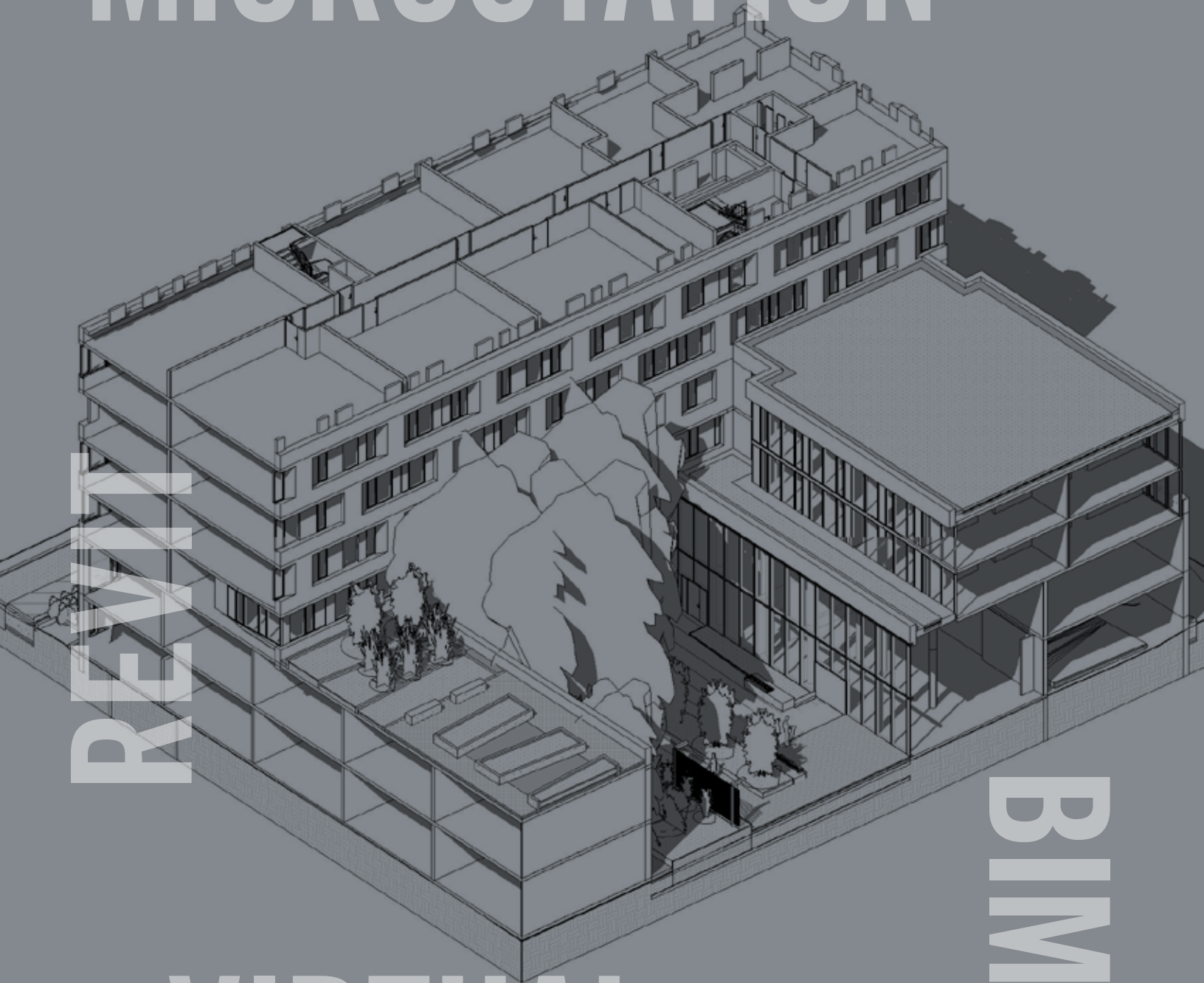
VICTORIA PARK SUBWAY STATION AND BUS TERMINAL REPLACEMENT • TORONTO, ONTARIO

# INFRASTRUCTURE



THE LATEST DESIGN TOOLS AND TECHNOLOGIES  
LET YOU VISUALIZE AND TROUBLESHOOT THE  
**PROJECT FROM START TO FINISH**

# MICROSTATION



REVI

BIM

# VIRTUAL REALITY

# OUR NAME IS ON THE AWARDS, BUT THE SUCCESSES ARE REALLY YOURS

**2017**

**Vaughan Urban Design Award of Excellence**  
Vaughan Civic Centre Library

**Toronto Urban Design Award of Excellence**  
Toronto Public Library, Scarborough Civic Centre  
Branch and Civic Green

**2016**

**CSLA National Award**  
Regent Park Block 20

**2015**

**Landscape Ontario Award of Excellence**  
Don River House

**2014**

**OPPI Excellence in Planning Award**  
Humbertown Redevelopment

**National Urban Design Award**  
Victoria Park Subway Station

**CSLA Award of Excellence**  
Victoria Park Subway Station

**2013**

**Toronto Urban Design Award**  
Victoria Park Subway Station

**Toronto Urban Design Award**  
Native Child and Family Life Centre

**CSLA Award of Excellence**  
West Toronto Railpath

**2012**

**National Urban Design Award**  
West Toronto Railpath

**2011**

**Toronto Urban Design Award of Excellence**  
West Toronto Railpath

**OALA Carl Borgstrom Award for  
Service to the Environment**  
Presented to Scott Torrance

**Unilock Permeable Parking Award**  
Downsview Park Sustainable Parking Court

**2010**

**Green Roofs for Healthy Cities Green  
Roof Award of Excellence**  
ESRI Canada's Garden in the Sky

**Design Exchange Award**  
Native Child and Family Life Centre

**Green Toronto Award**  
ESRI Canada's Garden in the Sky

**CSLA Award of Excellence**  
Victoria Park Subway Station

**2009**

**Design Exchange Award**  
West Toronto Railpath

**Design Exchange Award**  
ESRI Canada's Garden in the Sky

**2006**

**Design Exchange Award**  
Downsview Memorial Parkette

# WE WORK WITH THE BEST.

## MUNICIPALITIES, UNIVERSITIES AND GOVERNMENT

---

- + CANADA LANDS CORPORATION
- + CANADA POST
- + CITY OF BARRIE
- + CITY OF BRAMPTON
- + CITY OF HAMILTON
- + CITY OF MARKHAM
- + CITY OF MISSISSAUGA
- + CITY OF TORONTO
- + CITY OF VAUGHAN
- + ESRI CANADA
- + HUMBER COLLEGE
- + METROLINX
- + NATIVE CHILD AND FAMILY SERVICES OF TORONTO
- + TORONTO PUBLIC LIBRARY
- + TORONTO COMMUNITY HOUSING
- + TORONTO TRANSIT COMMISSION
- + TOWN OF WASAGA BEACH
- + WATERFRONT TORONTO
- + YORK UNIVERSITY

## DEVELOPERS

---

- + COLLECDEV
- + CONCORD ADEX
- + CONTEXT
- + EMPIRE COMMUNITIES
- + FIRST CAPITAL
- + FREED DEVELOPMENTS
- + MATTAMY
- + REMINGTON GROUP
- + RIOCAN
- + THE DANIELS CORPORATION
- + TRIDEL
- + URBANCORP
- + WINDMILL DEVELOPMENTS

## CONSULTANTS

---

- + ARUP
- + CANNON DESIGN
- + GRAZIANI + CORAZZA ARCHITECTS
- + HATCH
- + KIRKOR ARCHITECTS & PLANNERS
- + LGA ARCHITECTURAL PARTNERS
- + MONTGOMERY SISAM ARCHITECTS
- + MORIYAMA & TESHIMA ARCHITECTS
- + PERKINS+WILL
- + QUADRANGLE ARCHITECTS
- + TEEPLE ARCHITECTS
- + WZMH
- + ZAS ARCHITECTS + INTERIORS



# WANT A FRESH PERSPECTIVE ON LANDSCAPE ARCHITECTURE? ASK US.



T: +1 416 696 8686  
E: BUSINESS@FORREC.COM

